

# MONTHLY MEMBERSHIP PROGRESS REPORT

District 13 OH1

Results as of: 3/31/2026

GMT:

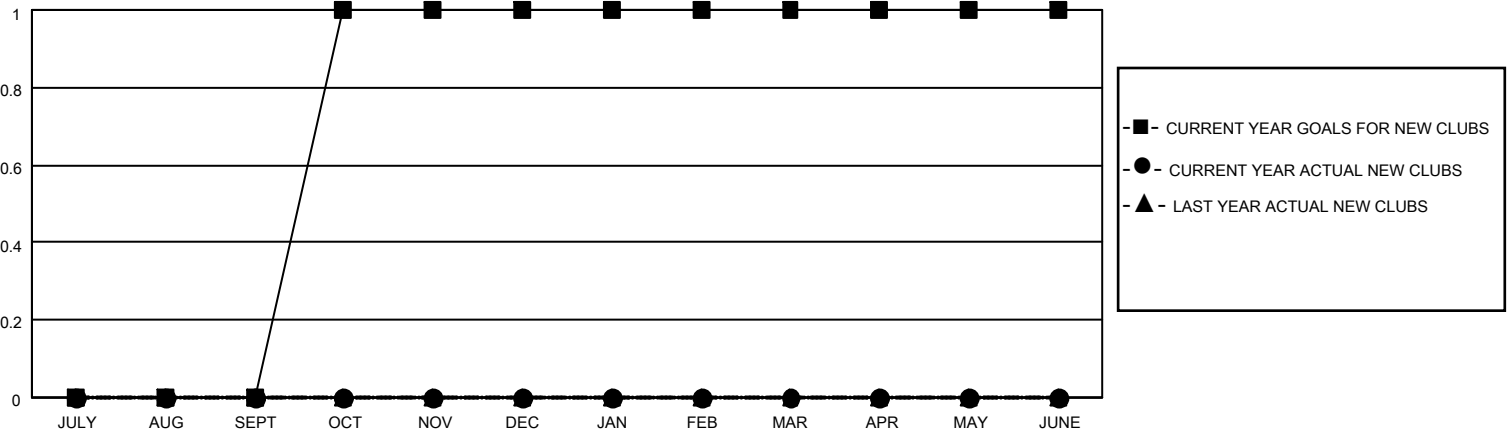
LOCATION OHIO

GMT CA

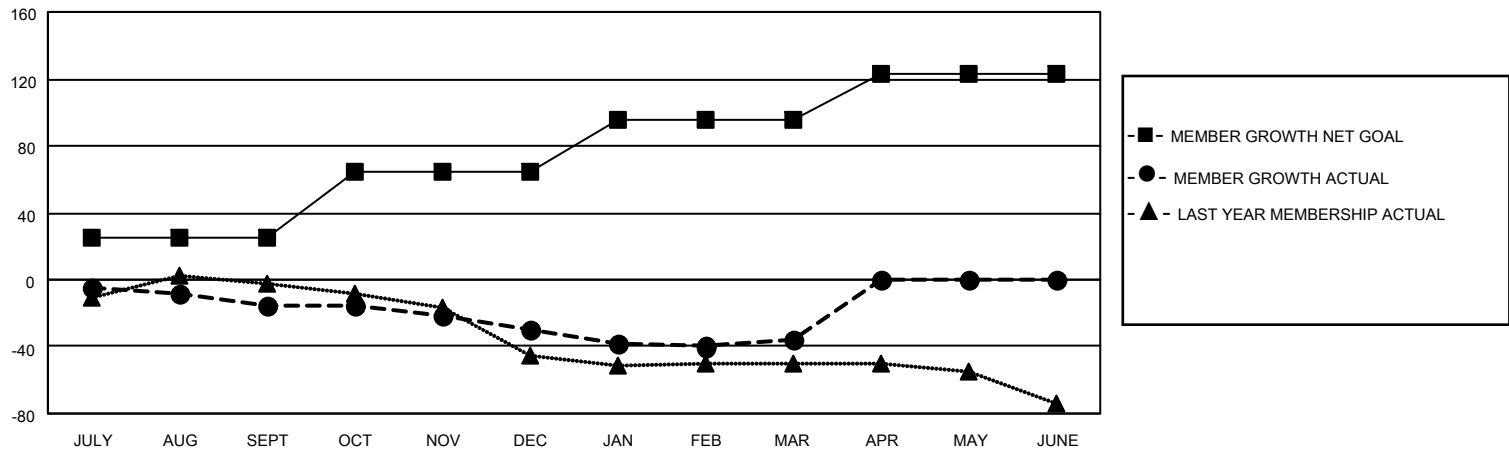
Clubs			
RESULTS FOR 2025-2026			
QUARTER	NEW CLUB GOAL	NEW CLUBS	DROPPED CLUBS
JULY/AUG/SEPT	0	0	0
OCT/NOV/DEC	1	0	0
JAN/FEB/MAR	0	0	0
APR/MAY/JUNE	0	0	0

Members			
RESULTS FOR 2025-2026			
QUARTER	MEMBER GROWTH NET GOAL	MEMBER GROWTH ACTUAL	DROPPED MEMBERS ACTUAL (including transfers)
JULY/AUG/SEPT	25	16	23
OCT/NOV/DEC	40	13	27
JAN/FEB/MAR	30	17	20
APR/MAY/JUNE	28	0	0

GOALS AND ACTUAL NEW CLUBS CUMULATIVE



GOALS AND ACTUAL MEMBERS CUMULATIVE



DROPPED CLUBS: 0	21 CLUBS OF 48 ADDED 1 OR MORE NEW MEMBERS	<b>GENDER DISTRIBUTION</b> MALE 1,026 (78.32%) FEMALE 284 (21.68%)
<b>DROPPED MEMBERS</b> DECEASED 19 CLUB CANCELLED 0 OTHER 52 TOTAL 71	<a href="#">CLICK HERE FOR CUMULATIVE MEMBERSHIP DATA</a>	TOTAL FAMILY UNIT MEMBERS 209 FAMILY MEMBERS PAYING HALF DUES 107